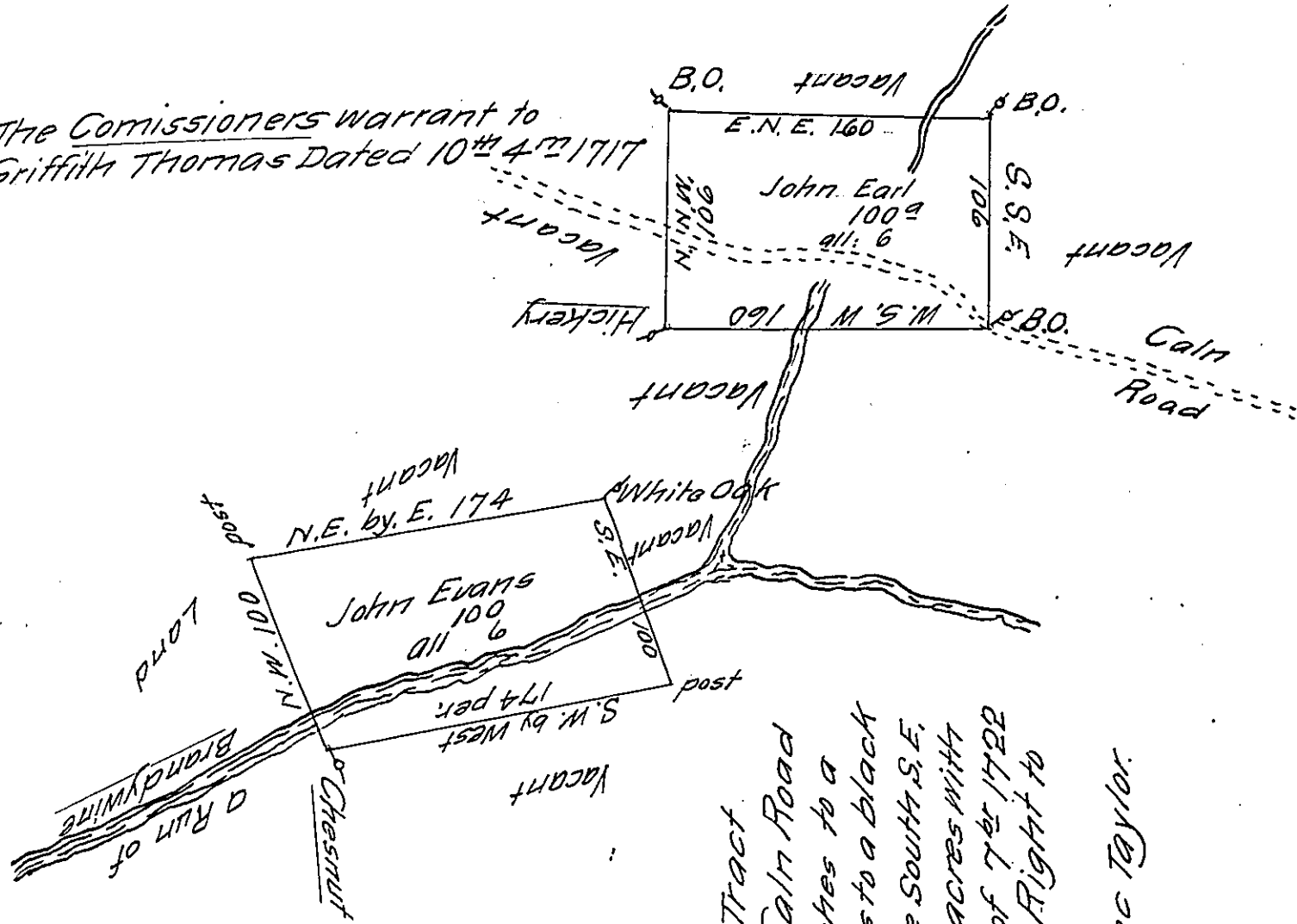


The Commissioners warrant to Griffith Thomas Dated 10th 4th 1717



John Evans Begining at a Corner Marked Chesnut Tree on the south side of a Branch of Brandywine thence N.W. 100 perches to a post thence N.E. by E. 174 per to a W. oak thence S.E. 100 perches to a post thence S.W. by West 174 perches to y^e place of Begining Containing 100 acres with the usual allowance of 6 p^c.

Surveyd april 10th 1716

These two Tracts are both poor Land the worth I know nott

p^r Isaac Taylor

John Earl's Land in the Barrens in the Welch Tract Begining at a Corner Marked Black Oak by Calm Road thence West south West by vacant Barrens 160 perches to a hickery thence N.N.W. by vacant Land 106 perches to a black oak thence East N.E. 160 per. to a Black Oak thence South S.E. 106 perches to y^e place of Begining Containing 100 acres with the usual allowance of 6 p^c. Surveyed y^e 28th of 7th 1722 in Right of Griffith Thomas who assigned his Right to y^e sd Earl

p^r Isaac Taylor

IN TESTIMONY that the above is a copy of the original remaining on file in the Department of Internal Affairs of Pennsylvania, made conformably to an Act of Assembly approved the 16th day of February, 1833, I have hereunto set my Hand and caused the Seal of said Department to be affixed at Harrisburg, this Seventeenth day of February 1910

Henry Houch

Secretary of Internal Affairs.